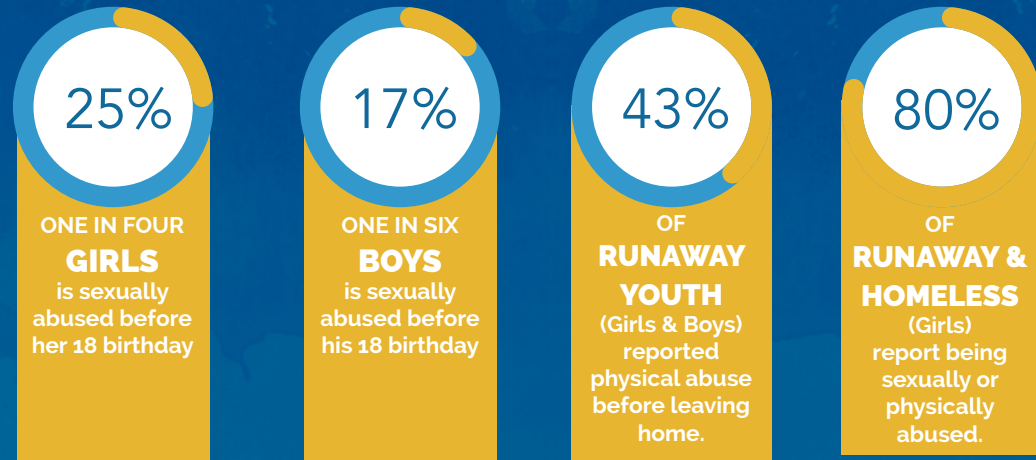


## WHY YOU SHOULD HELP

Sally Kate Winters Family Services strives to provide the best care for each child that walks through our doors. This requires a significant number of resources, and as we continue to grow and increase the quality and quantity of care for children and youth in need, the need for financial resources increases as well. National statistics provided by the U.S. Administration for Children and Families and [1800Runaway.org](http://1800Runaway.org) report the following:



## DONORS

Without the generosity of donations from our donors and fundraising from our surrounding community, Sally Kate Winters Family Services would not be able to change the lives of so many at-risk children and youth. Your giving allows our program to make a positive difference in the lives of children and youth representing our community. Thank you for your support.

### THANK YOU, EVENT SPONSORS

**BANKFIRST**



Exceed Technologies, Adventure ATV LLC, Haas Outdoors, Lann Chemical, State Farm-Jamey Ballard, T.E. Lott & Company, Hannah Tours

### CHILDREN'S PROMISE ACT DONORS



**REPORT CHILD ABUSE 1.800.222.8000**



**IMPACT**  
REPORT

**2020-2021**

*"To empower children and families to seek and experience an improved quality of life."*

801 NORTH DIVISION STREET | POST OFFICE BOX 1233, WEST POINT, MS 39773

P: 662.494.4867 | F: 662.494.0870

[sallykatewinters.org](http://sallykatewinters.org)

## WHO WE ARE

Sally Kate Winters Family Services is a private nonprofit organization that offers a variety of social services and family support for children in need. Since its beginning, the goal has been to offer the gift of humanity, love and respect to children traumatized by child abuse and neglect. Sally Kate Winters now offers four unique programs that serve children – Emergency Shelter Program, Runaway & Homeless Youth Program, Transitional Living Program and the Children’s Advocacy Center.

## STATISTICS 2020-2021

### STATISTICS OF SALLY KATE WINTERS FAMILY SERVICES

Sally Kate Winters Family Services offers four unique programs that operate on a referral and voluntary basis. Services within all programs address the safety, well-being and permanency of children and youth experiencing child abuse, neglect, family violence and/or those who run away from home. The 2020-2021 Impact Report reflects these services.



### TOTAL CLIENTS SERVED: 322 CHILDREN AND YOUTH

CLAY COUNTY SERVICES – 12%	NOXUBEE COUNTY SERVICES – 5%
LOWNDES COUNTY SERVICES – 41%	WEBSTER COUNTY SERVICES – 0%
OKTIBBEHA COUNTY SERVICES – 11%	WINSTON COUNTY SERVICES – 5%
CHOCTAW COUNTY SERVICES – 4%	OTHER NORTHERN MS COUNTY SERVICES – 9%
ATTALA COUNTY SERVICES – 5%	OTHER SOUTHERN MS COUNTY SERVICES – 7%
MONROE COUNTY SERVICES – 1%	

## THE SALLY KATE WINTERS TEAM

### BOARD OF DIRECTORS

- |                                 |                        |                    |
|---------------------------------|------------------------|--------------------|
| • Greg Armstrong, President     | • Janet Gullett        | • Jessi Sugg       |
| • Scott Reed, Vice President    | • Kim Hood             | • Erica Ryals Pate |
| • Susan Spencer, Jr., Secretary | • Rebecca Hudson       | • Amy Crowley      |
| • Karen Mooney, Treasurer       | • Mark Jackson         | • Erin Wooten      |
| • Jamey Ballard                 | • Rosie Jones          |                    |
| • John Freeman                  | • Steven Woodruff, Jr. |                    |

### STAFF

#### Administration and Support

- Sheila G. Brand, Executive Director
- Paige Lamkin, Administrative Assistant
- Natalie White, LPC - Clinical Program Coordinator
- Sara Gallman, LMSW - CAC Program Coordinator
- Kelly Michael, Outreach/Office Assistant

#### Shelter/Runaway & Homeless Youth

- Kasy Ates, Shelter Counselor
- Cynthia Mathews, Shelter Case Manager

#### Transitional Living Program

- Genika McGee, TLP Advisor
- Vacant, TLP Life Skills Coach

#### Children's Advocacy Center

- Penny Peralto, CAC Forensic Interviewer
- Ashton Woodson, MDT Facilitator
- Breanna McQuirter, CAC Victim Advocate
- Laura Yelverton, MDT Coordinator
- Vacant, CAC Therapist/MDT Facilitator
- Sophia Manley, CAC Intake Assistant

## PRIMARY SERVICE AREA

Prior to the advent of Children’s Advocacy Centers, abused children faced a maze of entities in reporting the abuse and receiving appropriate therapeutic care. With the help of a Children’s Advocacy Center like Sally Kate Winters Family Services, the manner in which child abuse is reported and prosecuted has been revolutionized. Utilizing multidisciplinary teams, we are able to include all entities involved in a child abuse case under one roof to work together to make decisions regarding the management of each child abuse case.

### CAC Multidisciplinary Teams Include:

- Law Enforcement
- Child Protection
- Prosecution
- Mental and/or Medical Health
- Advocacy Services

Shelter and temporary housing offered through the Emergency Shelter, RHY Basic Center Program, and Transitional Living Program provide immediate safety and support services for children and youth. Community Safe Place sites are managed by Sally Kate Winters Family Services to ensure children and youth have access to services. These sites are a collaborative partnership with local businesses within the primary service area.



## FINANCIAL HIGHLIGHTS

### INCOME:

	2019	2020
GRANT REVENUE .....	\$1,304,084	\$1,408,197
UNITED WAY .....	\$ 43,152	\$ 43,511
SPECIAL EVENTS / MISCELLANEOUS REVENUE .....	\$ 52,699	\$ 51,686
CONTRIBUTIONS .....	\$ 119,820	\$ 177,714
<b>TOTAL INCOME .....</b>	<b>\$1,519,755</b>	<b>\$1,681,108</b>

### EXPENSES:

PROGRAM SERVICES .....	\$1,095,646	\$1,294,627
MANAGEMENT AND GENERAL .....	\$ 94,316	\$ 118,077
FUNDRAISING .....	\$ 51,126	\$ 58,405
RESERVE FUNDING .....	\$ 17,293	\$ 23,862
<b>TOTAL EXPENSES .....</b>	<b>\$1,258,381</b>	<b>\$1,494,471</b>
<b>VOLUNTEER HOURS VALUED .....</b>	<b>\$ 51,760</b>	<b>\$ 36,570</b>