



SALLY KATE  
WINTERS  
*Family Services*



**IMPACT**  
REPORT  
-----  
**2017-2018**

## MISSION STATEMENT

*"To empower children and families to seek and experience an improved quality of life."*

## THE SALLY KATE WINTERS TEAM

### BOARD OF DIRECTORS

- Kristen Williams, President
- Greg Armstrong, Vice President
- Steven Woodruff, Jr., Secretary
- John Freeman, Treasurer
- Buff Sanders
- Stevan Black
- Susan Spencer
- Janet Gullet
- Carley Estes
- Fred Ivy
- Joey Bragg
- Dr. George Hurst
- Stacy Monteleone
- Scott Reed
- Trina Dendy
- Anita Mattox

### STAFF

#### Administration and Support

- Sheila G. Brand, Executive Director
- Natalie White, Clinical Program Coordinator
- Kelsey Malone, Office Manager

#### Shelter/Runaway & Homeless Youth

- Kasy Ates, Shelter Counselor
- Cynthia Matthews, Shelter Case Manager

#### Transitional Living Program

- Monique Tillman, TLP Advisor
- Brittany Chandler, TLP Life Skills Coach

#### Children's Advocacy Center

- Carly Thomas, CAC Victim Advocate
- Ashton Woodson, CAC Pilot Project Manager
- Penny Peralto, CAC Forensic Interviewer

# WELCOME

## VISION

**Sally Kate Winters Family Services** is represented by the butterfly logo that signifies the journey of families. The beauty of a butterfly is only possible through the progression of a meager caterpillar. This is often a similar journey for our families. As children and families become involved with the program, they become like a caterpillar wrapped by a protective cocoon of education, shelter, support and supervision. As knowledge, skills and safety are gained, needs are met and relationships are strengthened, children and families will begin to grow and develop a sense of empowerment to find their own wings. Through a nurturing process, families representing all walks of life will begin to resemble the amazing progression of the butterfly. Like the caterpillar becomes a new creation, families and children will have an opportunity to experience an improved quality of life through their encounter with Sally Kate Winters Family Services.

## WHO WE ARE

Sally Kate Winters Family Services is a private, nonprofit organization that offers a variety of social services and family support for children in need. Since the inception of the Sally Kate Memorial Children's Home in 1990, the goal of the program has been to offer the gift of humanity, love and respect to children traumatized by child abuse and neglect. Through the years, services were added to serve the runaway and homeless youth population in Mississippi, and provide further support to child abuse victims through an accredited Children's Advocacy Center. Today, Sally Kate Winters offers four unique programs that operate on a referral and voluntary basis—Emergency Shelter Program, Runaway & Homeless Youth Program, Transitional Living Program and the Children's Advocacy Center.

## WHY SUPPORT?

Sally Kate Winters Family Services strives to provide the best care for each child that walks through our doors. This requires a significant number of resources, and as we continue to grow and increase the quality and quantity of care for children and youth in need, the need for financial resources increases as well.

Through the generosity of others, Sally Kate Winters has been able to assist hundreds of children and youth traumatized by child abuse, neglect, homelessness and/or are considered a runaway.

# MESSAGE FROM SALLY KATE WINTERS

## MESSAGE FROM OUR EXECUTIVE DIRECTOR

Sally Kate Winters Family Services has experienced an amazing year! From donors to volunteers and collaborative partners, we have shared the opportunity of offering an improved quality of life for 118 children through Residential Services and 180 children through the Children's Advocacy Center program. Each face, each smile and each tear, was met with a response from Sally Kate Winters, offering hope for a better tomorrow. Together, we have experienced high school graduations, first-time jobs, honor roll parties, birthday celebrations and so much more. Each child leaving our program with so much more than when they arrived... increased self-worth, personal empowerment, connections to caring adults, expanded personal skills and improved overall well-being.

The most fundamental service we offer to children and families are the tools to expand their own personal resiliency. The ability to overcome challenges of all kinds – trauma, tragedy and personal crisis – and emerge as stronger, wiser and more personally determined to experience positive change. Resiliency is a skill that can be strengthened within children through services, support systems and healthy resources that increase their likelihood to exceed despite all obstacles. Resiliency is the outcome of trauma-informed services and positive risk factors that are vital to the emotional well-being of each child served through Sally Kate Winters.

As we look to begin our twenty-eighth year of service to children and youth, we are committed to staying true to our mission of 'empowering them to seek and experience an improved quality of life.' This is possible through the support and generosity of each volunteer, each donor, each staff member and each community partner. Together, we will continue to build resiliency within the character of each child in crisis.

Thank you for your commitment of supporting our efforts!

**Sheila G. Brand**

# STATISTICS 2017-2018

## STATISTICS OF SALLY KATE WINTERS FAMILY SERVICES

Sally Kate Winters Family Services offers four unique programs that operate on a referral and voluntary basis. Services within all programs address the safety, well-being and permanency of children and youth experiencing child abuse, neglect, family violence and/or those who run away from home. The 2017-2018 Impact Report reflects these services.



## TOTAL CLIENTS SERVED: 298 CHILDREN AND YOUTH

CLAY COUNTY SERVICES – 17%  
LOWNDES COUNTY SERVICES – 25%  
OKTIBBEHA COUNTY SERVICES – 18%  
CHOCTAW COUNTY SERVICES – 8%  
CHICKASAW COUNTY SERVICES – 1%  
MONROE COUNTY SERVICES – 1%

NOXUBEE COUNTY SERVICES 4%  
WEBSTER COUNTY SERVICES – 1%  
WINSTON COUNTY SERVICES – 5%  
OTHER NORTHERN MS COUNTY SERVICES – 13%  
OTHER SOUTHERN MS COUNTY SERVICES – 7%

# PROGRAMS

## EMERGENCY SHELTER PROGRAM

The Sally Kate Winters Family Services Emergency Shelter Program provides shelter and crisis intervention services for abused, neglected and homeless children. There are 8 shelter beds available for children and youth representing the MS foster care system referred for services by MS Child Protection Services. These children receive around-the-clock care for up to 45 days of shelter placement. The Emergency Shelter Program seeks to bring humanity, love and respect into the lives of children during their time of crisis.

## RUNAWAY AND HOMELESS YOUTH (RHY)

The Runaway and Homeless Youth Program within Sally Kate Winters Family Services provides shelter and crisis support to youth ages 12 to 17 who are identified as homeless and/or runaways. There are 4 shelter beds available for runaway and homeless youth at all times with 2 emergency shelter staff on call 24 hours a day. Shelter and crisis support is provided for up to 21 days with follow-up and aftercare services available at the end of his/her shelter stay.

## SAFE PLACE

Sally Kate Winters Family Services also partners with the National Safe Place Organization to establish safe place sites throughout North Mississippi. These Safe Places are located throughout each community allowing youth a local option to seek help when they are in need. Safe Place sites are trained to offer immediate assistance to youth in crisis, with Sally Kate Winters Family Services available 24 hours a day to connect the youth with services.

## TRANSITIONAL LIVING PROGRAM (TLP)

The Transitional Living Program provides housing, skills training and support services to youth ages 16 to 22. The purpose of this program is to help participants who are homeless, at risk of homelessness or in need of transitional living in order to become independent and achieve self-sufficiency.

## CHILDREN'S ADVOCACY CENTER

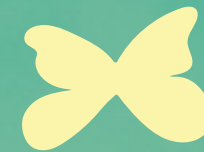
Prior to the advent of Children's Advocacy Centers, abused children faced a maze of entities in reporting the abuse and receiving appropriate therapeutic care. With the help of a Children's Advocacy Center like Sally Kate Winters Family Services, the manner in which child abuse is reported and prosecuted has been revolutionized. Utilizing multidisciplinary teams, we are able to include all entities involved in a child abuse case under one roof to work together to make decisions regarding the management of each child abuse case.

CAC Multidisciplinary Teams Include:

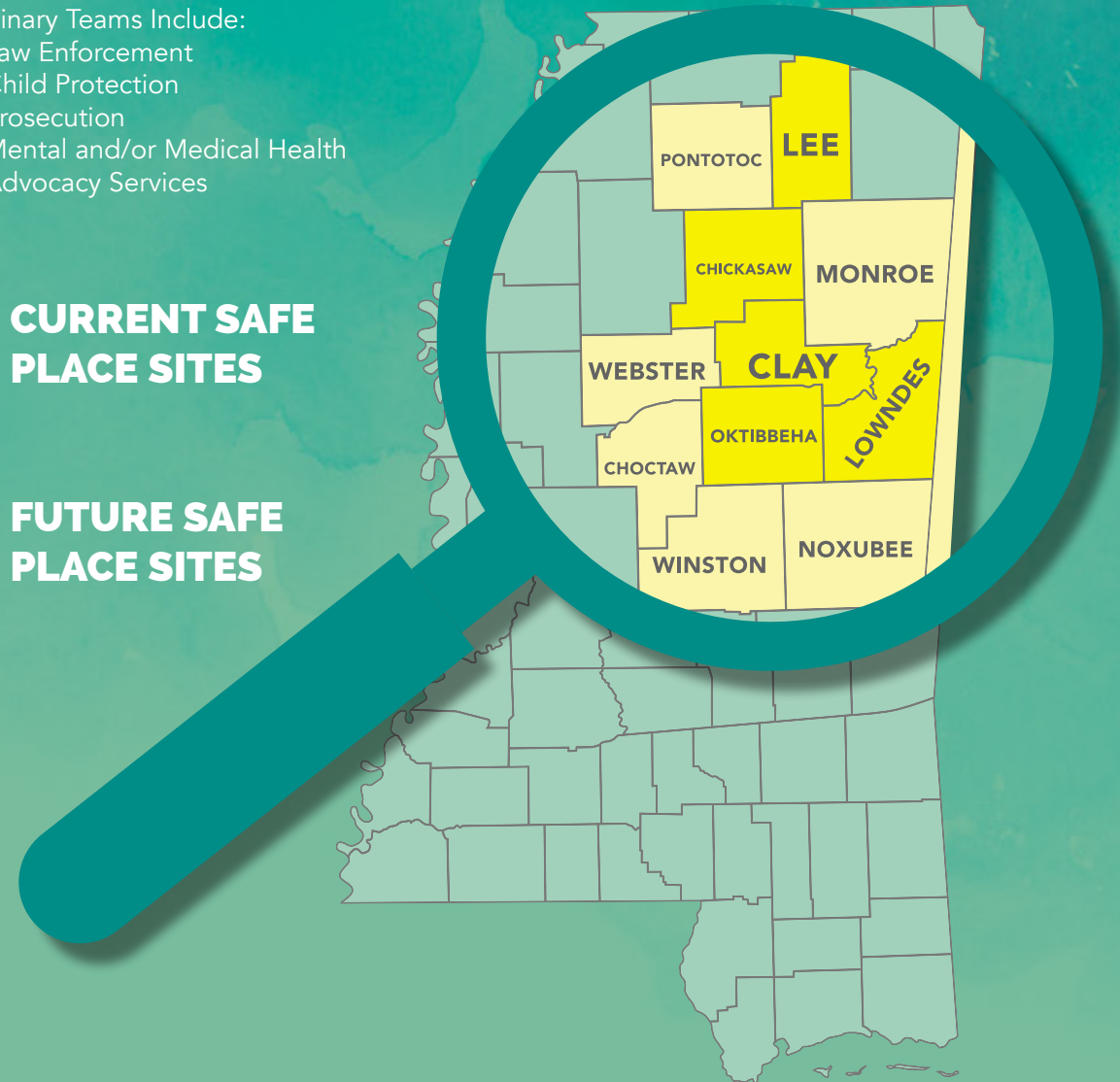
- Law Enforcement
- Child Protection
- Prosecution
- Mental and/or Medical Health
- Advocacy Services



**CURRENT SAFE PLACE SITES**



**FUTURE SAFE PLACE SITES**



## DONORS

### DONORS

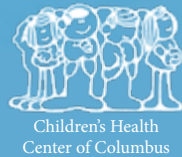
Without the generosity of donations from our donors and fundraising from our surrounding community, Sally Kate Winters Family Services would not be able to change the lives of so many at-risk children and youth. Your giving allows our program to make a positive difference in the lives of children and youth representing our community. Thank you for your support.

One of our many long-time supporters is Mississippi State University's Kappa Delta Sorority. Since 1994, Kappa Delta has dedicated multiple events throughout the year to raise money for Sally Kate Winters Family Services. Many members of Kappa Delta also volunteer twice a week. We are so thankful for our partners like Mississippi State University's Kappa Delta Sorority.

### THANK YOU TO OUR ANNUAL EVENT SPONSORS



BlueCross BlueShield  
of Mississippi  
It's good to be Blue



**LEWIS ELECTRIC**



Prestage Farms, Lyon Insurance, Lann Chemical & Supply, Graham Roofing Inc., Rose Drug Co., BancorpSouth, North Mississippi Medical Center-West Point, Renasant Bank, Petal Pushers, 4-County Electric, Adventure ATV, Columbus Nissan, Bank First, Southwire.

## FUNDRAISERS

APRIL IS CHILD ABUSE PREVENTION MONTH



Kappa Delta  
SORORITY

SPRING INTO  
**ACTION**  
5 K & FUN RUN

DONATE TO HELP CHILDREN & YOUTH IN NEED

FOR MORE DETAILS, PLEASE VISIT  
[sallykatewinters.org/events](http://sallykatewinters.org/events)

APRIL  
**2019**

SPRING INTO  
**ACTION**  
5 K & FUN RUN

DONATE TO HELP CHILDREN & YOUTH IN NEED

**RUN TO SUPPORT CHILD ABUSE PREVENTION MONTH**



## AWARENESS MONTHS

### NATIONAL SAFE PLACE (NSP)

March

### CHILD ABUSE PREVENTION MONTH

April

### NATIONAL BULLYING PREVENTION MONTH

October

### NATIONAL RUNAWAY PREVENTION MONTH

November

FOR MORE DETAILS, PLEASE VISIT

[sallykatewinters.org/events](http://sallykatewinters.org/events)

## FINANCIAL HIGHLIGHTS

### INCOME:

GRANT REVENUE .....

2017  
\$1,194,410

2018  
\$1,182,797

UNITED WAY .....

\$51,974

\$41,475

SPECIAL EVENTS / MISCELLANEOUS REVENUE .....

\$35,706

\$43,310

CONTRIBUTIONS .....

\$157,701

\$116,903

**TOTAL INCOME** .....

\$1,439,801

\$1,384,485

### EXPENSES:

PROGRAM SERVICES .....

\$1,003,777

\$1,091,223

MANAGEMENT AND GENERAL .....

\$85,673

\$92,805

FUNDRAISING .....

\$41,469

\$47,731

**TOTAL EXPENSES** .....

\$1,130,919

\$1,231,759



801 NORTH DIVISION STREET  
POST OFFICE BOX 1233  
WEST POINT, MS 39773

P: 662.494.4867  
F: 662.494.0870

[sallykatewinters.org](http://sallykatewinters.org)